



Summer Music and Recreation Camp
104 Hummingbird Rd.
Jemez Springs, New Mexico 87025
Phone: (575) 829-3060 Fax: (575) 829-3226
groups@HummingbirdMusicCamp.org

SEPTEMBER 11-13, 2015 ACA RETREAT

Register by August 21, 2015
Share your talent, Bring your Musical
Instrument

Let's Trust the
Process
Come to the
Mountains for
Fellowship

\$104.00 Includes
Dbl. Occupancy
Room in North
Campus

Friday Dinner,
Saturday meals,
Sunday Breakfast

Reserve your
place today!

Contact:

Ted U 505-404-8433
santaanagolfa@mail.swcp.com

Jean 505-280-7646
ckrofy@gmail.com

North Campus is a perfect place for large group functions, delightfully situated among the tall pines in a quiet, secluded, peaceful spot across the river from our main (south) camp area. To the south are majestic forested mountains and to the north the land slopes gently down to the well-stocked fishing river.

GATHERING/MEETING FACILITY

The main meeting room in **Harmony Hall** is spacious enough to comfortably seat 80 people. Tables are recessed into the walls and chairs are stacked ready for your use. A separate carpeted lounge area next to the corner fireplace provides a cozier meeting area. Feel free to use the refrigerator and workspace to prepare snacks, coffee, or tea. In addition, there are two restrooms and a bedroom with a double bed, toilet and sink.



The entrances to the three large buildings that comprise North Campus are covered by a large "breezeway" that can accommodate outdoor get togethers.

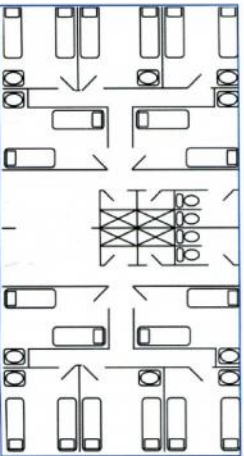
DINING ARRANGEMENTS

For meals, it's a short walk across the bridge back to the South Campus. The spacious **Dining Hall** is separated into 5 sections: **Lounge**, a cozy carpeted area with a fireplace for down-time; **Serving Area** where "cafeteria style" meals are served; **Lower Dining Room** is connected to the serving area with seating for 40 people at round tables; **Dining Room** with a spectacular view of the majestic mountains that surround the camp, seats 150 people at large tables with benches; **Kitchen** is where we prepare the food and dishes are washed. When the weather permits, take advantage of the large outdoor wooden deck that seats 50 people.

Cavity Cave, located on South Campus next to the Concert Shell, is our snack store where candy, cookies, chips, soda, fruit juices and bottled water can be purchased. Cavity Cave can be opened upon request. This is a perfect place to take that afternoon or evening break.

SLEEPING ACCOMMODATIONS

Acoma and **Chaco** are the two sleeping buildings, with ten bedrooms in each. The bedrooms each have two single beds and a sink. Showers and toilets are off the main foyer in each building. Including the double bed in Harmony Hall, North Campus can comfortably sleep 42 people.



PACKING LIST

We suggest: sleeping bag (or bed liners), pillow, sleeping attire, towels, washcloths, flashlight, hiking boots and comfortable shoes for meetings, shorts for warm days, pants for cool nights and rainy days, warm jacket. Toiletries: soap, shampoo, toothbrush and paste, brush, comb, tissues. Optional: canteen, playing cards, fishing equipment and camera.

Cell Phones do not work within the Jemez Valley where the camp is located. There is a pay phone in the office for your phone needs.

THE CAMP

Hummingbird Music Camp was founded in 1959 by K.L. and Wanda Higgins.

Together they built a lasting tradition of a place for a quiet getaway without interference.

Hummingbird is owned and managed by the Higgins family with a staff of 10 people.



ACTIVITIES

100 feet north of North Campus is a large covered space to enjoy the outdoors. There is a fire pit around which to sing songs, tell tall tales or devour s'mores. This area can also be used for camping out in tents or RV's. There are two restrooms, one for males and one for females, but no shower facilities.

Fishing can be found in many areas along the river, with good spots for fly fishing as well as deep holes where you might catch one of the big ones that lie on the bottom. The river is stocked monthly for good fishing to keep or catch and release.

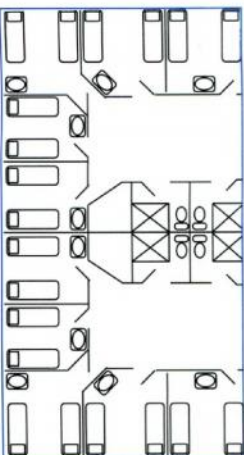
There are a variety of hiking trails around the camp. A walk along the tree lined road that follows the river (with gradual ups and downs) takes about twenty minutes to reach Camp Shaver Meadow. Day or night hikes to the

waterfall usually take one and a half hours round trip. The Fox Trot hike to the upper cliffs overlooking the valley and camp is difficult. The trail is steep and narrow in spots and requires good hiking boots and some hiking skills.

FEES

All fees vary according to the services and accommodations you request and are quoted when you make your reservation.

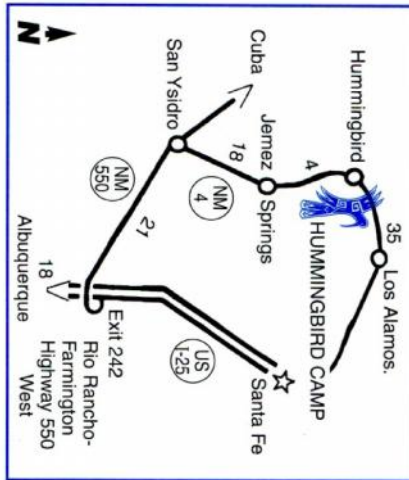
A deposit of \$100.00 is required to confirm your reservation and is not refundable, unless your cancellation allows us the opportunity to rebook the dates.



DATES AVAILABLE
 North Campus facilities are available from mid-January to mid-May and then again from mid-August until mid-November.

DIRECTIONS
 Hummingbird is located four miles north of Jemez Springs on NM4. Approximate Driving Time:
 Albuquerque . . . 1 hr. 15 min.
 Rio Rancho . . . 1 hr. 00 min.
 Santa Fe. 1 hr. 45 min.
 Los Alamos. 45 min.
 Cuba. 1 hr. 00 min.

INFORMATION
 Hummingbird Music Camp
 104 Hummingbird Rd.
 Jemez Springs, NM 87025
 Phone: 1-505-829-3060
 Fax: 1-505-829-3226
 Web Page: www.HummingbirdMusicCamp.org



\$30 - per person per night = 2 nights
 \$2 insurance 2.00
 \$8 Dinner 12.00
 \$6 Breakfast 7.00
 \$7 lunch

 \$97.00
 + 7.00 tax

 \$104.00
 Camping = \$10 per person per night

Registration Form

- Name _____
- Phone No. _____
- Comments _____

Return to Ted U or Jean B

or Mail to:

T. Ulinksi

712 Paseo Sandia, Bernalillo, NM 87004